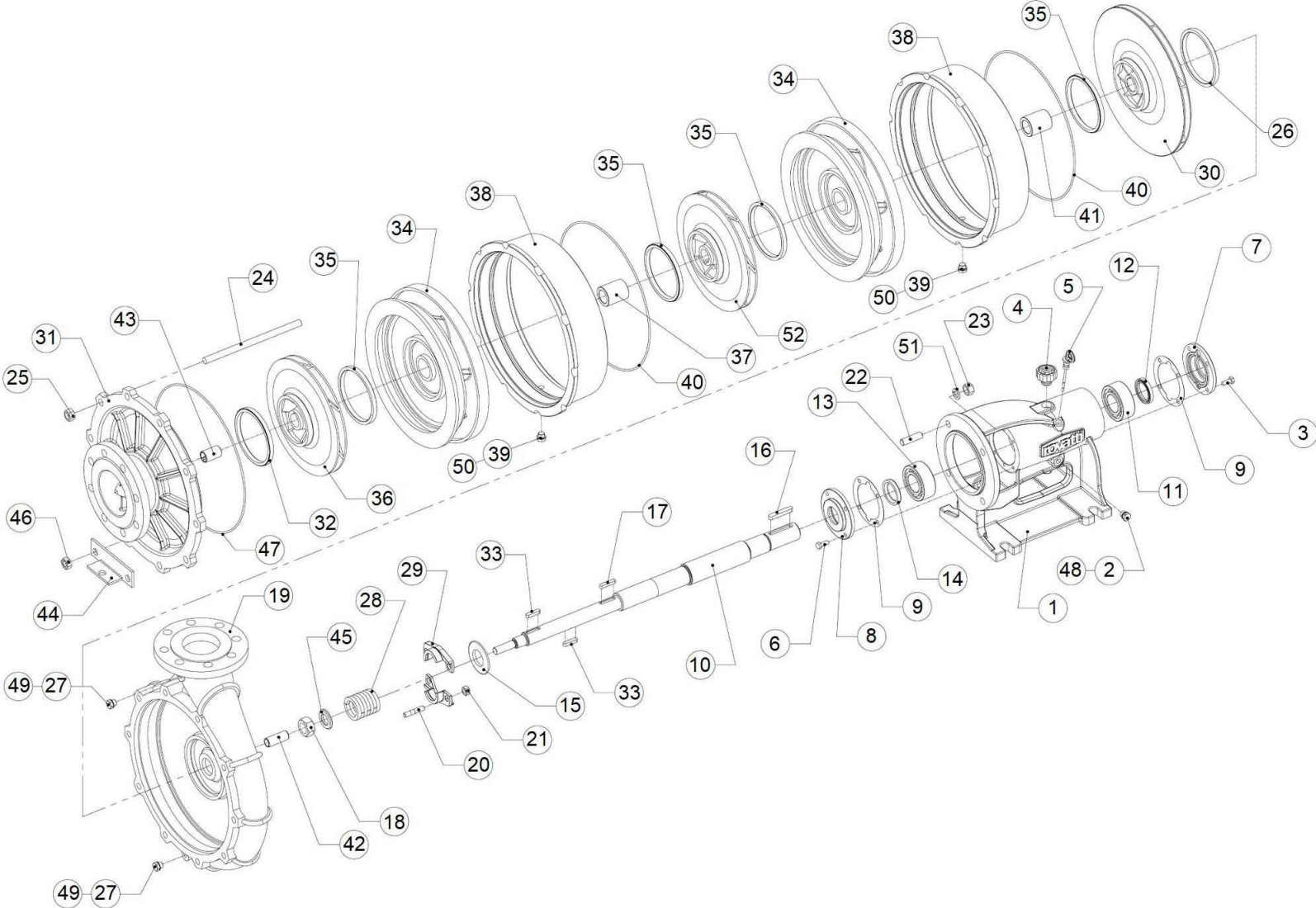


S3K100/4E-CF



S3K100/4E-CF

		Code	Description	Qty
1		203346A/A	Bearing support	1
2		204470B	Magnetic plug	1
3		3VTE002	Screw	4
4		203370P	Breather plug	1
5		203405P	Oil dipstick	1
6		3VTE002	Screw	4
7		203903A/A	Cover	1
8		203903A/A	Cover	1
9		203355F	Gasket	2
10		214991H	Shaft	1
11		3CU123	Ball bearing	1
12		3AT054	Seal ring	1
13		3CU123	Ball bearing	1
14		3AT054	Seal ring	1
15		3AP005	Seal ring	1
16		3LI015	Key	1
17		3LI073	Key	1
18		216377N	Self-locking nut	1
19		213973A/A	Pump body	1
20		3VP005T	Stud bolt	2

S3K100/4E-CF

		Code	Description	Qty
21		3DEB010T	Nut	2
22		3VP021	Stud bolt	4
23		3DEA014	Nut	4
24		3VP059	Tie rod	10
25		3DEA014	Nut	8
26		213710I	Wear ring	1
27		3NO019	Plug	2
28		215054F	Stuffing-box ring	7
29		214896T/A	Twiner stuffing-box flange	1
30		214992A00	Impeller	1
31		203652A/1A	Suction cover	1
32		213710I	Wear ring	1
33		3LI012	Key	3
34		203646A/A	Diffuser	3
35		213710I	Wear ring	6
36		203690A00	Impeller	1
37		203694T	Spacer	2
38		203685A/A	Diffuser shell	3
39		3NO019	Plug	3
40		3OR035	O-Ring	3

S3K100/4E-CF

		Code	Description	Qty
41		216037T	Bush	1
42		209486Q	Bush	1
43		206979C	Bearing	1
44		203762N	Foot	1
45		206714D	Washer	1
46		3DEM014	Nut	2
47		216376F	Gasket	1
48		3RA004	Washer	1
49		3RA004	Washer	2
50		3RA004	Washer	3
51		3RE014	Washer	4
52		203690A00	Impeller	2