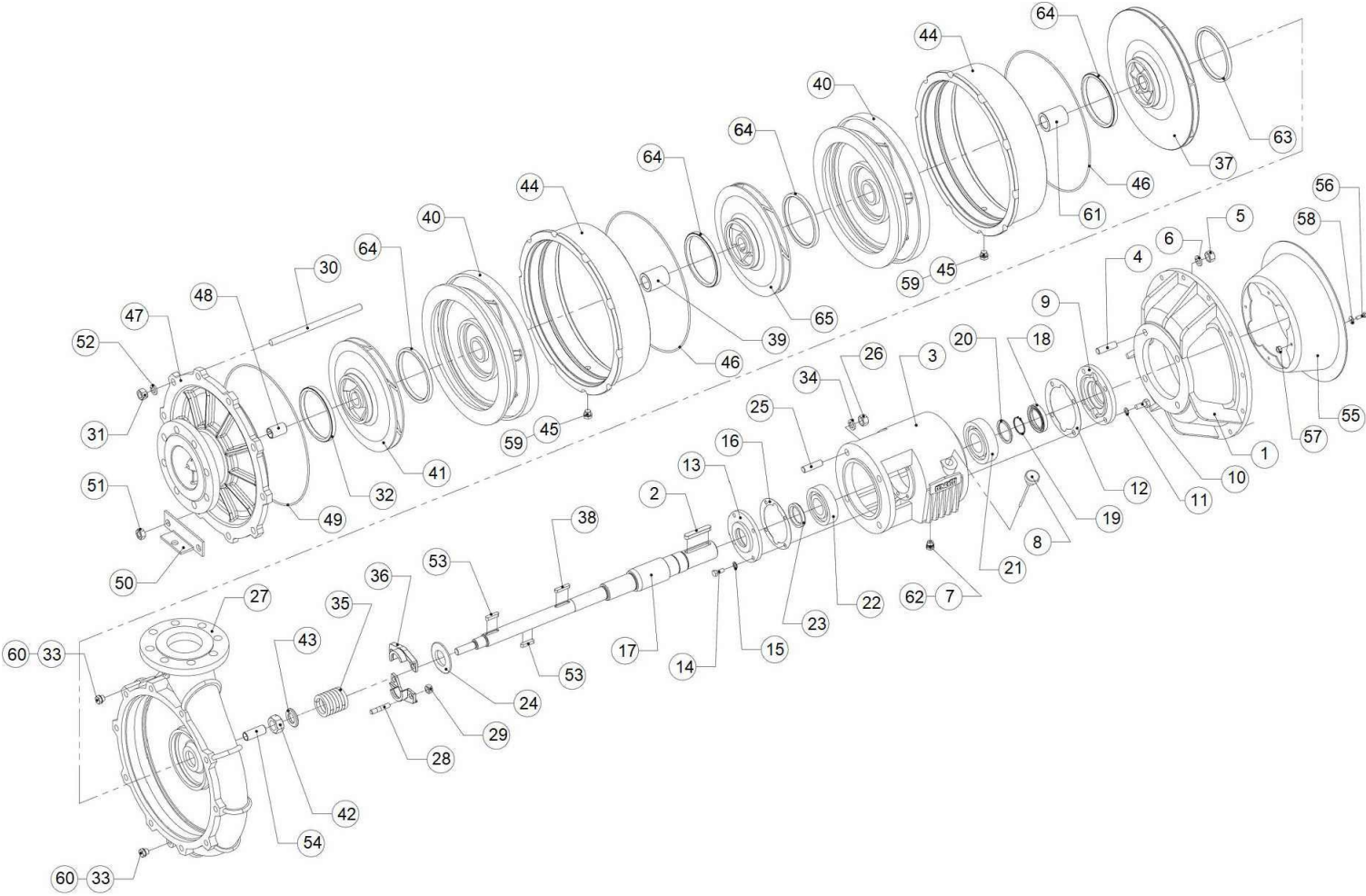


F33K100/4E-CF



F33K100/4E-CF

		Code	Description	Qty
1		208211O/A	Flange	1
2		3LI039	Key	1
3		207080A/A	Bearing support	1
4		3VP021	Stud bolt	4
5		3DEA014	Nut	4
6		3RE014	Washer	4
7		204470B	Magnetic plug	1
8		207216B	Breather plug	1
9		204001A/A	Cover	1
10		3VTE004	Screw	4
11		3RE010	Washer	4
12		204008F	Gasket	1
13		207091A/A	Cover	1
14		3VTE002	Screw	4
15		3RE008	Washer	4
16		207092F	Gasket	1
17		215810H	Shaft	1
18		3AT010	Seal ring	1
19		3AFE022	Seeger	1
20		3RR004	Washer	1

F33K100/4E-CF

		Code	Description	Qty
21		3CU030	Ball bearing	1
22		3CU053	Roller bearing	1
23		3AT054	Seal ring	1
24		3AP005	Seal ring	1
25		3VP021	Stud bolt	4
26		3DEA014	Nut	4
27		213973A/A	Pump body	1
28		3VP005T	Stud bolt	2
29		3DEB010T	Nut	2
30		3VP059	Tie rod	10
31		3DEA014	Nut	8
32		213710I	Wear ring	1
33		3NO019	Plug	2
34		3RE014	Washer	4
35		215054F	Stuffing-box ring	7
36		214896T/A	Twiner stuffing-box flange	1
37		214992A00	Impeller	1
38		3LI073	Key	1
39		203694T	Spacer	2
40		203646A/A	Diffuser	3

F33K100/4E-CF

		Code	Description	Qty
41		203690A00	Impeller	1
42		216377N	Self-locking nut	1
43		206714D	Washer	1
44		203685A/A	Diffuser shell	3
45		3NO019	Plug	3
46		3OR035	O-Ring	3
47		203652A/1A	Suction cover	1
48		206979C	Bearing	1
49		216376F	Gasket	1
50		203762N	Foot	1
51		3DEM014	Nut	2
52		3RE014	Washer	8
53		3LI012	Key	3
54		209486Q	Bush	1
55		212446P	Protection	1
56		3VTE115Z	Screw	3
57		3DEA006Z	Nut	3
58		3RP001Z	Washer	3
59		3RA004	Washer	3
60		3RA004	Washer	2

F33K100/4E-CF

		Code	Description	Qty
61		216037T	Bush	1
62		3RA004	Washer	1
63		213710I	Wear ring	1
64		213710I	Wear ring	6
65		203690A00	Impeller	2