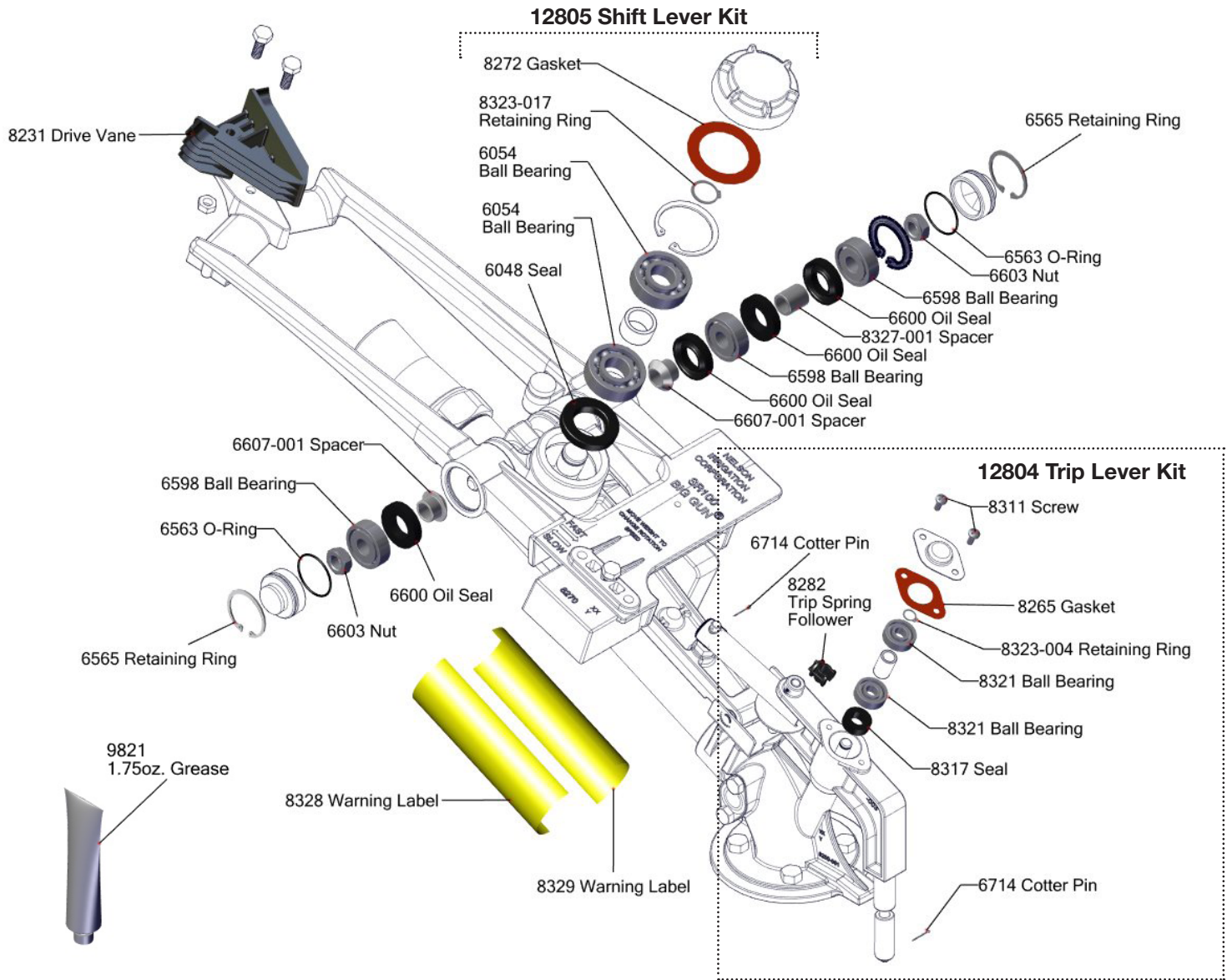


ORIGINAL BIG GUN

SR100 COMPLETE SERVICE KIT #12573



Also Includes:
12011 - Lower Bearing Kit, HD100



ORIGINAL BIGGUN

SR100 SERVICE KIT #12573 PART NUMBERS

Item Number	Description	Qty
9822	SERVICE KIT, DRIVE ARM & COUNTERWEIGHT - SR100/SR150	
6563	O-RING, -024	2
6565	RING, RETAINING, -125 BASIC INTERNAL, SS	2
6598	BEARING, BALL, 12 x 32 x 10 mm, OPEN	3
6600	SEAL, RADIAL LIP, 1.260" X .625" X .250"	4
6603	NUT, .4375-20 HEX SPCL - F100/SR100/SR150	2
6607-001	SPACER, CONE, TEFLON COATED	2
8327-001	SPACER, DRIVE ARM TO CWT - SR100/SR150	1
9821	GREASE, LUBRIPLATE 130-AA, 1.75 OZ TUBE	1

12011	SERVICE KIT, BEARING ASSY - HD100	
6559	BEARING, BALL, 50MM X 80MM X 16MM, ONE SEAL	2
6566	GASKET, HOUSING - HD100	2
6996	RING, BRAKE - HD100	1
6997	SEAL, UPPER - HD100	1
6998	SEAL, CENTER - HD100	1
7001	GASKET, ELBOW - SR100	1
7004	SPRING, BRAKE - HD100	8
7009	SEAL, DUST - HD100	1
8967	O-RING, -231 BN60	1
10083	RETAINER ASSEMBLY - HD100	1
10342	O-RING, -225	1
6794-001	GREASE, LUBRIPLATE LOW-TEMP, 8 OZ CAN	1
7007-001	O-RING, -331 SPECIAL, EXTERNALLY LUBED	1

12804	SERVICE KIT, TRIP LEVER - SR100/SR150	
6714	PIN, COTTER, .062" x .50"	2
8265	GASKET, TRIP LEVER CAP - SR100	1
8282	FOLLOWER, TRIP SPRING - SR BIG GUNS	1
8311	SCREW, #8-32 x .375" LG PHIL PAN HEAD SELF TAP	2
8317	SEAL, RADIAL LIP, .750" x .375" x .250"	1
8321	BEARING, BALL, 8 x 22 x 7 mm, OPEN	2
8323-004	RING, RETAINING, -31 BASIC INTERNAL	1

12805	SERVICE KIT, SHIFT LEVER - SR100/SR150	
6048	SEAL, RADIAL LIP, 1.575" X .875" X .250"	1
6054	BEARING, BALL, 17 x 40 x 12 mm OPEN	2
8272	GASKET, SHIFT LEVER CAP - SR100	1
8323-017	RING, RETAINING, -66 BASIC INTERNAL	1

ADDITIONAL PARTS INCLUDED IN COMPLETE KIT		
8328	LABEL, WARNING, ENGLISH/ SPANISH/CHINESE	1
8329	LABEL, WARNING, FRENCH/GERMAN/SWEDISH	1
8231	VANE, DRIVE - SR100	1

