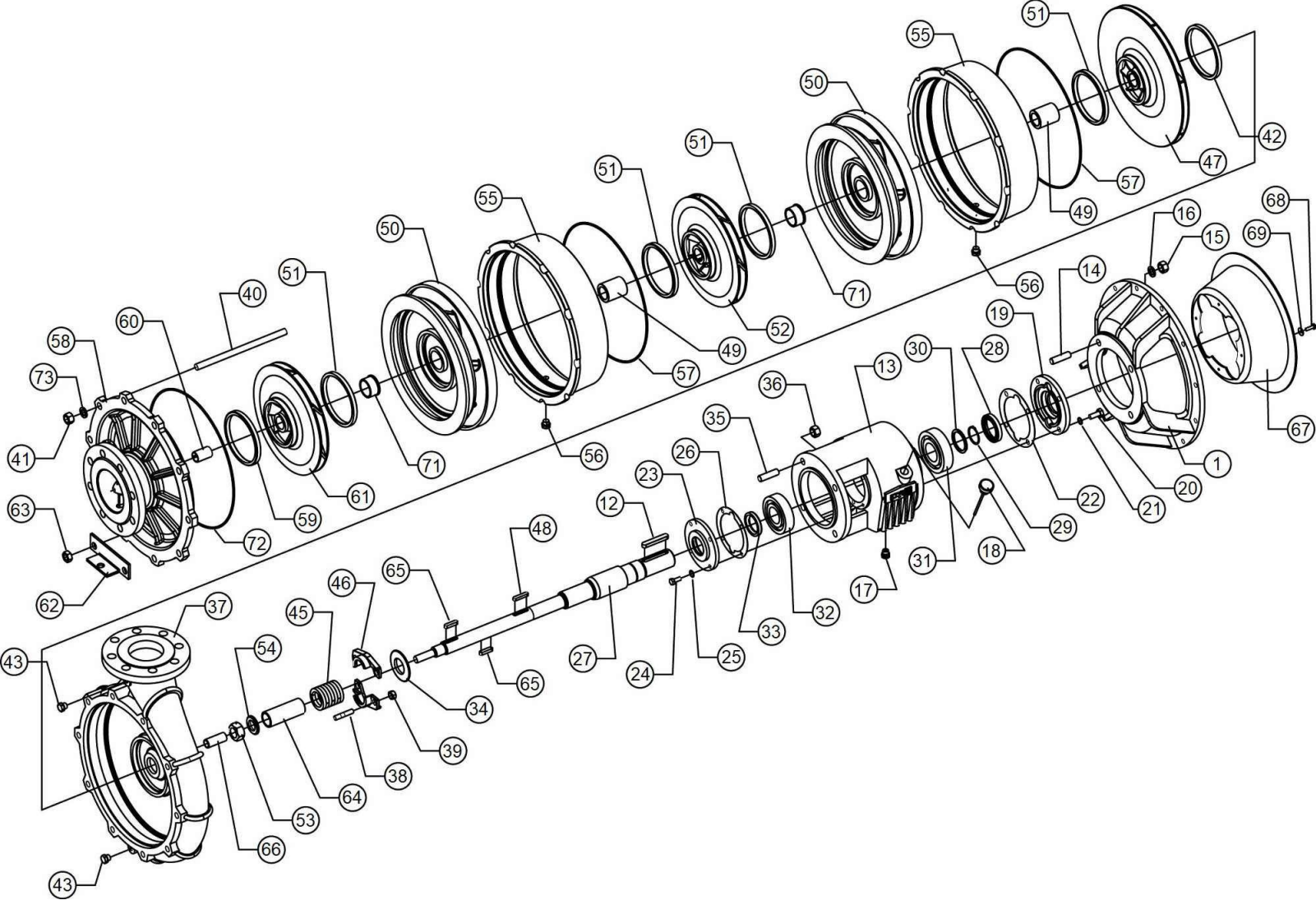


F43K100H/3E



F43K100H/3E

		Code	Description	Qty
1		2081870/A	Flange	1
12		3LI039	Key	1
13		207080A	Bearing support	1
14		3VP021	Stud bolt	4
15		3DEA014Z	Nut	4
16		3RE014Z	Washer	4
17		204470B	Magnetic plug	1
18		207216B	Breather plug	1
19		204001A/A	Cover	1
20		3VTE004	Screw	4
21		3RE010Z	Washer	4
22		204008F	Gasket	1
23		207091A/A	Cover	1
24		3VTE002	Screw	4
25		3RE008Z	Washer	4
26		207092F	Gasket	1
27		314375H	Shaft	1
28		3AT010	Seal ring	1
29		3AFE022	Seeger	1
30		3RR004	Washer	1


F43K100H/3E

		Code	Description	Qty
31		3CU030	Ball bearing	1
32		3CU053	Roller bearing	1
33		3AT054	Seal ring	1
34		3AP005	Seal ring	1
35		3VP021	Stud bolt	4
36		3DEA014Z	Nut	4
37		213973A/A	Pump body	1
38		3VP005T	Stud bolt	2
39		3DEB010T	Nut	2
40		3VP054	Tie rod	10
41		3DEA014Z	Nut	8
42		213710I	Wear ring	1
43		3NO019	Plug	2
45		215054F	Stuffing-box ring	7
46		214896T/A	Twiner stuffing-box flange	1
47		203689AF00	Impeller	1
48		3LI067	Key	1
49		203694T	Spacer	2
50		212623AF/A	Diffuser	2
51		213710I	Wear ring	4

F43K100H/3E

		Code	Description	Qty
52		203690AF00	Impeller	1
53		216377N	Self-locking nut	1
54		206714D	Washer	1
55		203685A/A	Diffuser shell	2
56		3NO019	Plug	2
57		3OR035	O-Ring	1
58		203652A/1A	Suction cover	1
59		213710I	Wear ring	1
60		206979C	Bearing	1
61		203690AF00	Impeller	1
62		203762N	Foot	1
63		3DEM014	Nut	2
64		213952Q	Bush	1
65		3LI012	Key	2
66		209486Q	Bush	1
67		212451P	Protection	1
68		3VTE115Z	Screw	3
69		3RP001Z	Washer	3
71		212622C	Bush	2
72		216376F	Gasket	1

F43K100H/3E

		Code	Description	Qty
73		3RE014Z	Washer	10